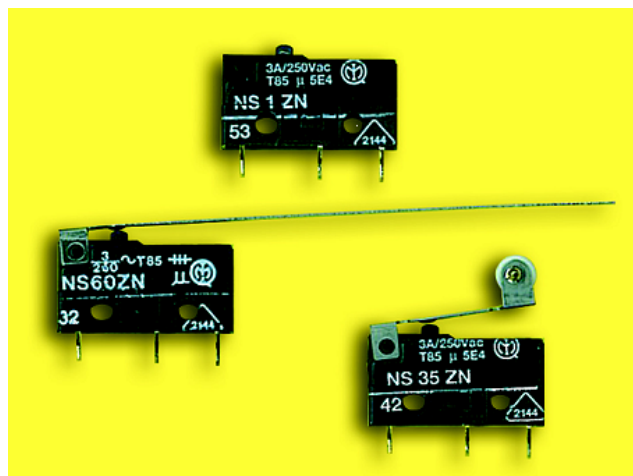


Il microinterruttore sub miniaturizzato della serie NS viene usato sui circuiti stampati, nei sistemi di allarme, sulle macchine da ufficio e nell' automazione industriale.

Le principali caratteristiche sono: piccole dimensioni, bassa forza azionante, capacità di portare e commutare correnti fino a 10A, contatti ad alta capacità, molto resistenti e autopulenti per strisciamento.

*The "NS" series microswitch is a precision sub miniature switch used with printed circuit boards, alarm devices, business machines, car automation, and machine tool applications.*

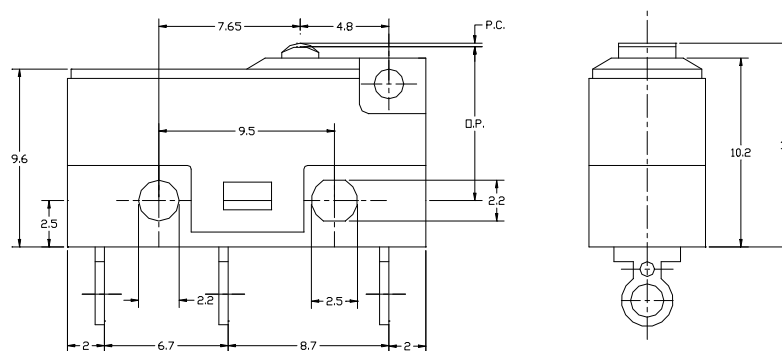
*The main characteristics are: small size, low operating forces, good power of commutation up to 10A, high capacity contacts, long resistance contacts, self cleaning contacts,*



## Caratteristiche Generali

## GENERAL CHARACTERISTICS

Tipo / Model		ZN Standard for. azionante / Standard op. force	ZL Bassa for. azionante / Low op. force	ZW Carichi gravosi / heavy loads
Forza azionante / Operating Force	O.F.	2N	0.8N	2N
Forza di ritorno / Release Force	R.F.	0.3N	0.25N	0.5N
Posizione di scatto / Operating Position	O.P.	8.3 ± 0.4mm		
Precorsa / Pre Travel	P.T.	0.5mm		
Over Travel / Oltre corsa	O.T.	0.15mm		
Differential Travel / Corsa differenziale	D.T.	0.15mm		
Portata dei contatti / Contact Rating 250V A.C. 50Hz.		3A	1A	10.5A
Temperatura di funzionamento / Operating Temp.		-20° +85° C		
Vita elettrica / Electrical Life (at nominal load)		50.000 operations		
Vita meccanica / Mechanical life		10 million operations		
Approvazioni / Approvals		IMO; UL	UL	



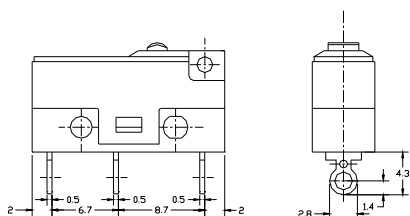
Modello Base / Basic model (pin button)

## Chiave di Identificazione

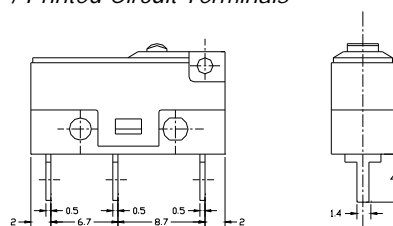
## CODE EXPLANATION & MARKING

	NS	XXX	ZN	X
<b>Serie/ Series</b>				
<b>Sovrastrutture / Actuators:</b>				
1: Pulsantino base / Basic (pin button) 4: Pulsante / Plunger 20: Leva laterale / Side M. Lever 30: Leva rotella laterale / Side M. Roller Lever 25: Leva standard / Straight Lever, 18 mm long 26: Leva standard / Straight Lever, 22 mm long 27: Leva standard / Straight Lever, 27 mm long 60: Leva standard / Straight Lever, 60 mm long 35: Leva rotella / Roller Lever, 16 mm long 36: Leva rotella / Roller Lever, 20 mm long 37: Leva rotella / Roller Lever, 25 mm long 123: Leva finta rotella / Simulated Roller Lever				
<b>Tipi / Models</b>				
ZL : bassa forza azionante / low op. force ZN : normale forza azionante / normal op. force ZW : heavy loads / carichi gravosi				
<b>Terminali / Terminals:</b>				

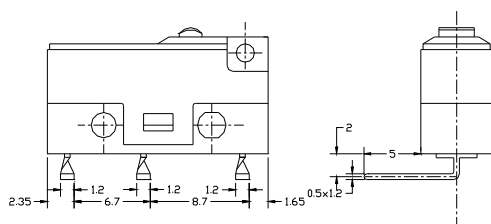
- Terminali a saldare / Solder Terminals



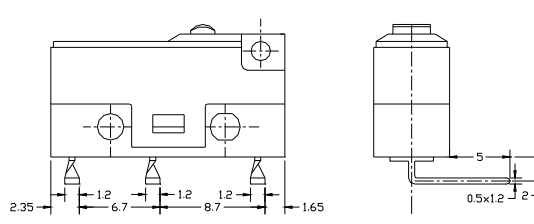
**6** – Terminali per circuito stampato / Printed Circuit Terminals



**7** – Terminali per circuito stampato, piegati a 90° sx / Printed Circuit, left angle terminals

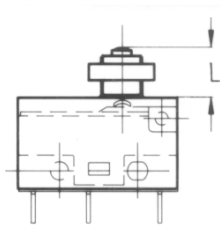


**8** – Terminali per circuito stampato, piegati a 90° dx / Printed Circuit, right angle terminals

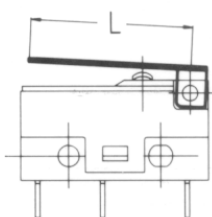
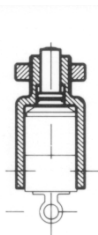


## Tipo di Azionamento

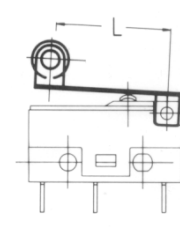
## ACTUATOR TYPE



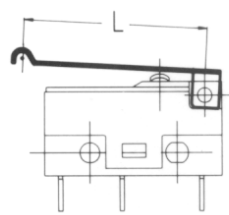
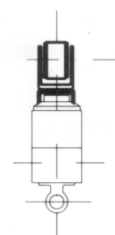
Pulsante / *Plunger*



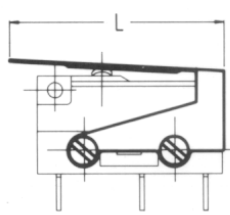
Leva standard / *Straight Lever*



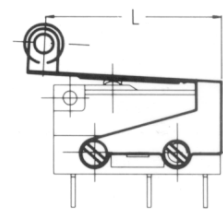
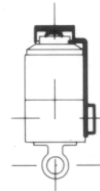
Leva rotella / *Roller Lever*



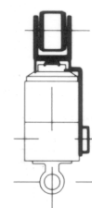
Leva finta rotella / *Simulated Roller Lever*



Leva laterale / *Side Mounted Lever*



Leva rotella laterale / *Side Mounted roller lever*



Tipo di Azionamento / <i>Actuator Type</i>	L ± 0.5 mm	O.F <sub>max</sub> gr	R.F <sub>min</sub> gr	P.T <sub>max</sub> mm	D.T <sub>max</sub> mm	O.T <sub>min</sub> mm	O.P mm
<b>NS1 ZN</b> - Pulsantino / <i>Pin button (basic)</i>	-	200	30	0.5	0.15	0.15	8.8 ± 0.4
<b>NS4 ZN</b> - Pulsante / <i>Plunger</i>	6.5	200	30	0.5	0.15	0.15	6.5 ± 0.5
<b>NS25 ZN</b> - Leva standard / <i>Straight lever</i>	18	55	8.0	1.9	0.6	0.6	10.0 ± 1.0
<b>NS26 ZN</b> - Leva standard / <i>Straight lever</i>	22	45	6.5	2.3	0.7	0.7	10.0 ± 1.0
<b>NS27 ZN</b> - Leva standard / <i>Straight lever</i>	27	35	5.0	2.8	0.9	0.9	10.0 ± 1.0
<b>NS60 ZN</b> - Leva standard / <i>Straight lever</i>	60	15	3.0	6.0	1.8	1.8	10.0 ± 1.0
<b>NS35 ZN</b> - Leva rotella / <i>Roller Lever</i>	16	60	9.0	1.7	0.5	0.5	15.5 ± 1.0
<b>NS36 ZN</b> - Leva rotella / <i>Roller Lever</i>	20	50	7.5	2.1	0.6	0.6	15.5 ± 1.0
<b>NS37 ZN</b> - Leva rotella / <i>Roller Lever</i>	25	40	6.0	2.6	0.8	0.8	15.5 ± 1.0
<b>NS123 ZN</b> - Leva falsa rotella / <i>Simulated roller lever</i>	18.8	55	8.0	2.0	0.6	0.6	12.0 ± 1.0
<b>NS20 ZN</b> - Leva laterale / <i>Side mounted lever</i>	22.5	250	50	2.0	1.0	0.4	10.0 ± 1.0
<b>NS30 ZN</b> - Leva rotella laterale / <i>Side mounted roller lever</i>	20.5	280	50	2.0	1.0	0.4	15.5 ± 1.0

**O.F:** Forza Azionante / *Operating Force*

**R.F:** Forza di ritorno / *Releasing Force*

**P.T:** Pre corsa / *Pre Travel*

**D.T:** Corsa Differenziale / *Differential Travel*

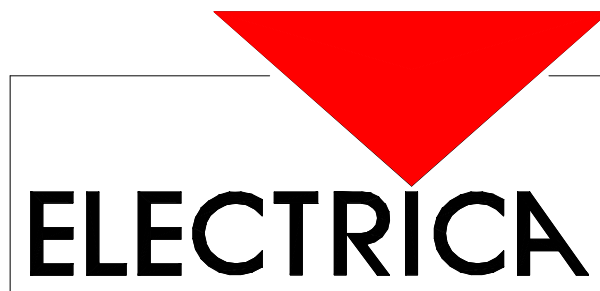
**O.T:** Oltre corsa / *Over Travel*

**O.P:** Posizione di scatto / *Operating Position*

### Avvertenza / **CAUTION:**

Quando si saldano i terminali sul circuito stampato, utilizzare un saldatore da 30 Watt per non più di tre secondi. Lasciar raffreddare i terminali saldati per almeno un minuto e controllare che ogni terminale sia adeguatamente isolato l'uno dall'altro.

*When soldering the terminals on the printed circuit, apply a soldering iron rated at 30W and finish soldering within three seconds. Do not move the solder terminals after soldering for at least one minute. Make sure that each of the adjacent terminals of the switch are properly insulated from each other.*



Per versioni personalizzate, si prega di contattare il ns. Uff. Tecnico /  
*For any different configuration, please contact the Factory*

---

**Electrica s.r.l.** - via privata Della Torre, 24 - 20127 Milano - Italia  
Tel.+39 02 2892641 Fax +39 02 2827511  
website: [www.electrica.it](http://www.electrica.it) email: [info@electrica.it](mailto:info@electrica.it)

**Microswitch Sales Division** - via Manin, 350/22 - 20099 Sesto San Giovanni (MI) - Italia  
Tel +39 02 243 00672 Fax +39 02 243 03271  
email: [microswitches@electrica.it](mailto:microswitches@electrica.it)