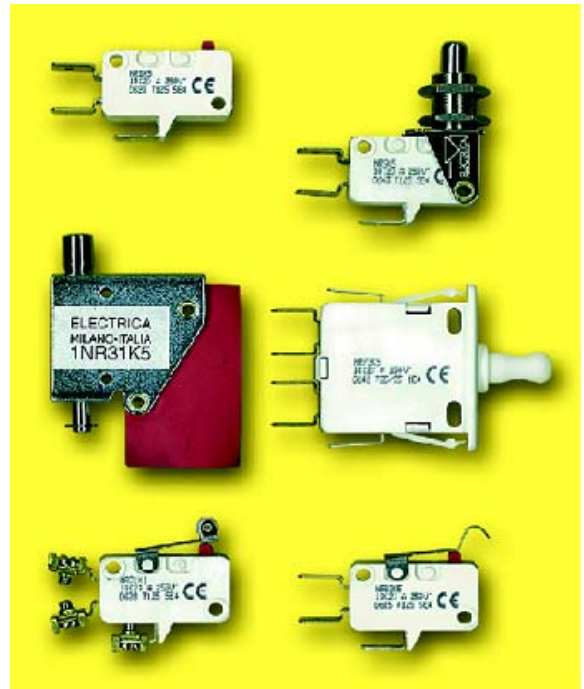


Il Microinterruttore miniaturizzato della serie NR è un trasduttore elettromeccanico di precisione, dotato di una lunga vita, buona resistenza a condizioni ambientali avverse come calore e umidità, buona potenza di commutazione (fino a 16A) unita ad una limitata forza azionante. Un prodotto con ottimo rapporto qualità/prezzo.

Alcuni esempi di applicazioni per la serie NR sono l'automazione industriale, gli elettrodomestici e la sicurezza.

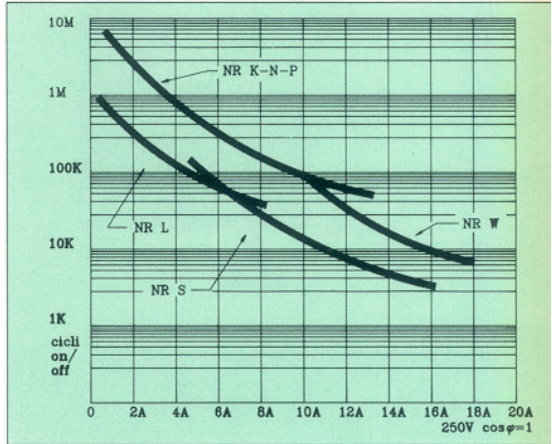
The "NR" series microswitch is a precision electromechanical switch with long life, excellent resistance to adverse environmental conditions, good switching current (up to 16A), and good operating force. A product with high performance at a relatively low cost.

Typical applications for "NR" sries switches are in industrial automation, household and safety appliances.



Caratteristiche Generali

GENERAL CHARACTERISTICS

Tipo / Model	K	N	L	S	W	T
Portata dei Contatti / Contact rating ¹ 250V A.C.50Hz.	10(2)A	10(2)A	6(2)A	6(2)A	16(3)A	10(2)A
Portata dei Contatti / Contact rating 30V D.C. L/R=5ms	3A					
Temperatura di funzionamento / Operating temperature	-20° to 125° C					
Vita meccanica attesa / Expected mechanical life	30 million of operations at 1Hz					
Isolamento / Initial insulation	up to 100MΩ					
Tensione di scarica tra i contatti / Breakdown voltage across contacts	>1250 Vrms at 50Hz					
Approvazioni / Approvals	IMQ; UL					
Vita elettrica attesa / Expected electrical life						

1) x(y): x=ohmic load (cosΦ=0.95); y=motor load (cosΦ=0.60), with an inrush current 6 times the steady state current.

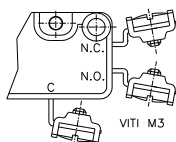
Chiave di identificazione

CODIFICATION & MARKING

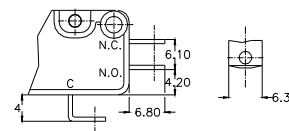
	NR	A	1	K	5
Serie / Series					
Contatti / Contact pattern:					
A = N.O. C = N.C. - = DEV.					
Sovrastrutture / Actuators:					
1-10 = Pulsanti / Push Buttons 20-99 = Leve / Levers 100-999 = Versioni Speciali / Special Versions					
Tipi / Models:					
L = Portata leggera / Low operating force K,N= Portata normale / Normal operating force W= Servizi gravosi / Heavy loads S= Contatti striscianti / Creeping contacts T= Distanza dei contatti / Contact distance > 3mm					
Terminali / Terminals:					

- 1 = Vite serrafilo / Screw connection
- 2 = Attacco faston / Quick connect 4.8X0.8mm
- 3 = Terminale a saldare corto / Short solder lug
- 4 = Terminale a saldare lungo / Long solder lug
- 5 = Attacco faston / Quick connect 6.35X0.8mm

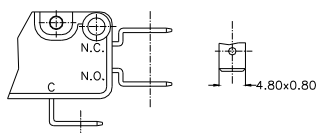
Screw connection
1



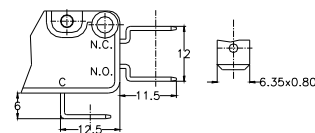
Long Solder Lug
4



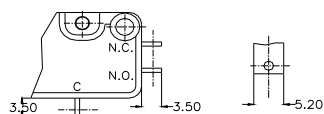
Quick Connect 4.80x0.80
2



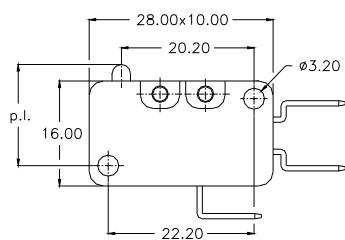
Quick Connect 6.35x0.80
5



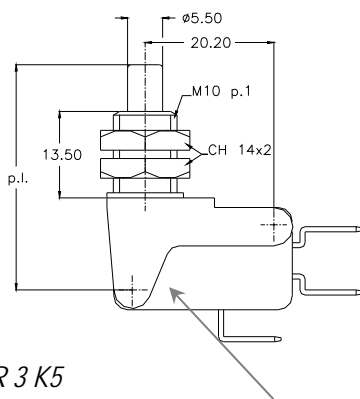
Short Solder Lug
3



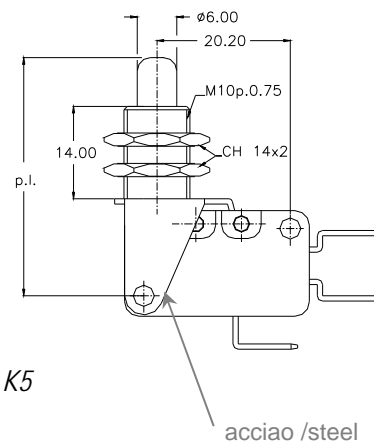
Sovrastruttura a pulsante **PLUNGER OPERATED SWITCHES**



NR 1 K5



NR 3 K5



NR 6 K5

plastica / plastic

acciaio / steel

Model	O.F. _{max} gr	R.F. _{min} gr	P.T. _{max} mm	D.T. _{max} mm	O.T. _{min} mm	P.I. mm	O.P. _{med} mm
NR 1 K	300	130	1.2	0.4	1.2	15.6	14.7
NR 3 K	330	130	1.5	0.4	4.0	35.5	34.0
NR 6 K	330	130	1.5	0.4	4.0	36.8	34.0

O.F.: Forza azionante / Operating Force

R.F.: Forza di ritorno / Releasing Force

P.T.: Precorsa / Pre Travel

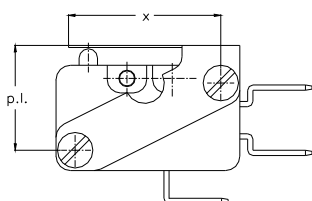
D.T.: Corsa differenziale / Differential Travel

O.T.: Oltre corsa / Over Travel

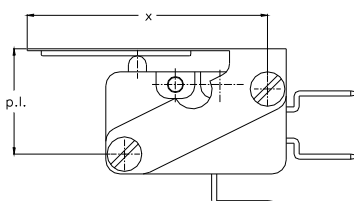
P.I.: Posizione di partenza / Free Position

O.P.: Posizione di scatto / Operating Position

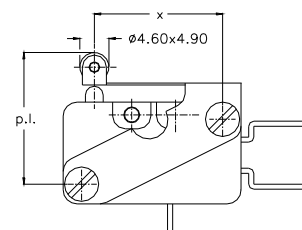
Sovrastruttura a leva **LEVER OPERATED SWITCHES**



NR 20 K5



NR 25 K5



NR 30 K5

Model	O.F. _{max} gr	R.F. _{min} gr	P.T. _{max} mm	D.T. _{max} mm	O.T. _{min} mm	P.I. mm	O.P. _{med} mm	dim X ±1 mm
NR 20 K	340	80	1.5	0.5	0.6	16.7	15	23.2
NR 25 K	220	80	2.5	1.0	1.0	17.8	16	37.3
NR 30 K	370	80	0.5	0.6	4.0	20.7	19	21.1

O.F.: Forza azionante / Operating Force

R.F.: Forza di ritorno / Releasing Force

P.T.: Precorsa / Pre Travel

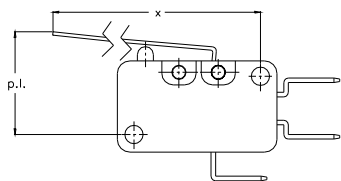
D.T.: Corsa differenziale / Differential Travel

O.T.: Oltre corsa / Over Travel

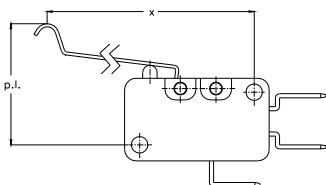
P.I.: Posizione di partenza / Free Position

O.P.: Posizione di scatto / Operating Position

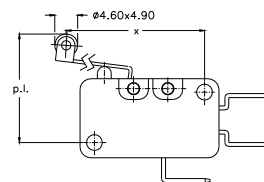
Sovrastruttura a leva LEVER OPERATED SWITCHES



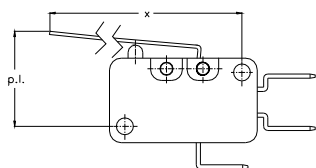
NR 51 ÷ 60 K5



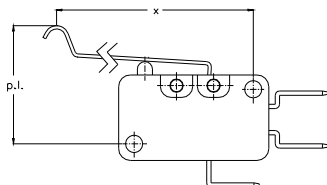
NR 92 ÷ 95 K5



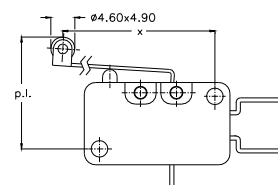
NR 61 ÷ 65 K5



NR 41 ÷ 50 K5



NR 82 ÷ 85 K5



NR 31 ÷ 36 K5

Model	O.F. ^{max} gr	R.F. ^{min} gr	P.T. ^{max} mm	D.T. ^{max} mm	O.T. ^{min} mm	P.I. mm	O.P. ^{med} mm	dim. X ±1mm
Leva / Lever								
NR 60 K	40	7	10.5	5.0	5.5	27.8	14.0	77.0
NR 50 K	75	25	6.55	2.5	3.0	20.8	15.5	70.5
NR 44 K	150	60	2.5	1.1	1.2	17.5	15.5	36.0.
NR 43 K	200	80	2.0	1.0	1.0	17.1	15.5	31.5
NR 42 K	250	100	2.0	0.8	0.8	16.6	15.5	26.5
Leva - Rotella / Roller - lever								
NR 64 K	100	20	5.5	3.0	2.5	25.4	21	40.5
NR 33 K	200	80	2.0	1.0	1.0	22.2	21	30.0
NR 32 K	250	100	1.5	0.8	0.8	21.6	21	25.0
NR 31 K	300	130	1.2	0.7	0.6	21.7	21	20.5
Leva finta rotella / Simulated lever								
NR 95 K	80	15	6.0	3.5	3.0	-	20	46.0
NR 85 K	130	50	3.0	1.5	2.0	-	21	40.0
NR 84 K	160	60	2.5	1.2	1.5	22.9	21	34.5
NR 83 K	200	80	2.0	1.0	1.0	-	21	30.0
NR 82 K	250	100	2.5	0.8	0.8	21.6	21	25.0

O.F.: Forza azionante / Operating Force

R.F.: Forza di ritorno / Releasing Force

P.T.: Precorsa / Pre Travel

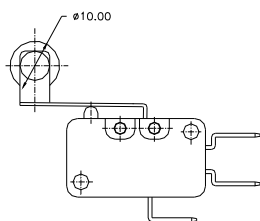
D.T.: Corsa differenziale / Differential Travel

O.T.: Oltre corsa / Over Travel

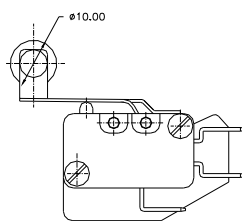
P.I.: Posizione di partenza / Free Position

O.P.: Posizione di scatto / Operating Position

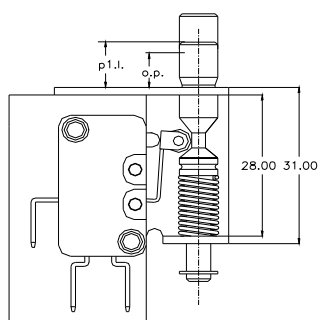
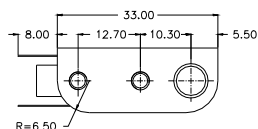
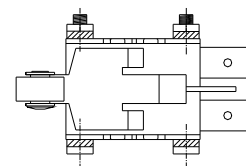
Tipi Speciali **SPECIAL TYPES**



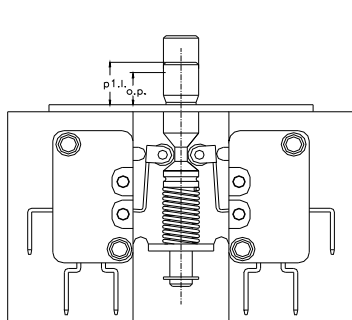
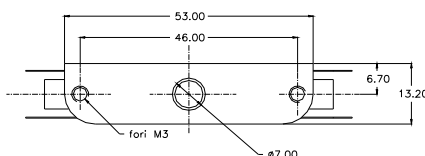
NR 105



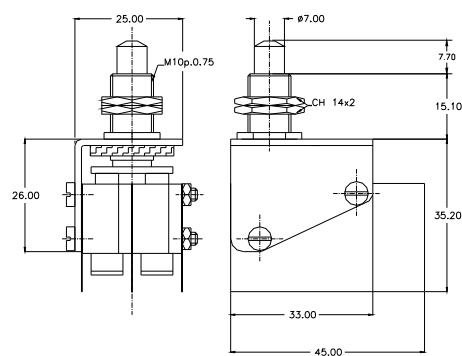
NR 118 (bi polare /bipolar)



interlock
1NR 31 K5



interlock
2 NR 31 K5 (bipolare / bipolar)



2 NR 4A K5 (bipolare / bipolar)

Model	O.F. ^{max} gr	R.F. ^{min} gr	O.P. ^{med} mm	P1.I. ^{max} mm	P2.I. ^{max} mm
NR 118 (bipolar)	400	150			
NR 119 (three-polar)	500	150			
1 NR 31 K	1300		4.1	9.5	15.5
2 NR 31 K	1330		4.1	9.5	15.5
2 NR 4A K	750	150			

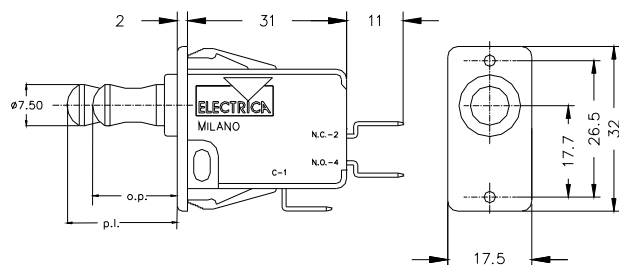
O.F.: Forza azionante / Operating Force

R.F.: Forza di ritorno / Releasing Force

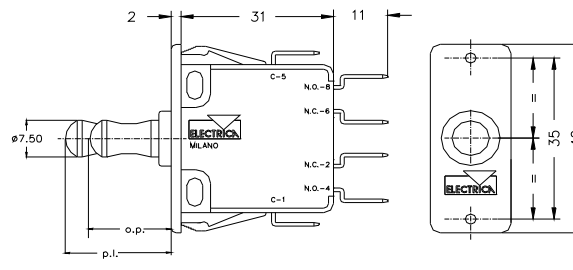
O.P.: Posizione di scatto / Operating Position

P1.I.: Posizione di partenza / free position 1 (micro non azionato / micro not switched)

P2.I.: Posizione manuale / manual position 2 (micro azionato / micro switched)



NR 72 K5



NR 73 K5

Model	O.F. ^{max} gr	R.F. ^{min} gr	O.P. ^{med} mm	O.T. ^{min} mm	P1.I. ^{max} mm	P2.I. ^{max} mm
NR 72 K	500	100	14.2	10.5	16.2	21.5
NR 73 K	825	175	14.2	10.5	16.5	21.5

O.F.: Forza azionante / Operating Force

R.F.: Forza di ritorno / Releasing Force

O.P.: Posizione di scatto / Operating Position

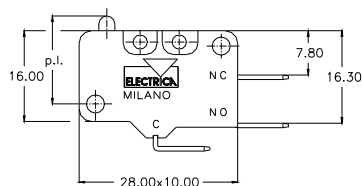
P1.I.: Posizione di partenza / free position 1 (micro non azionato / micro not switched)

P2.I.: Posizione manuale / manual position 2 (micro azionato / micro switched)

Nuovi Prodotti

NEW PRODUCTS

Microswitch NR-T (distanza tra i contatti / *contact distance* > 3mm)



Model	O.F. _{max} gr	R.F. _{min} gr	P.T. _{max} mm	D.T. _{max} mm	O.T. _{max} mm	P.I. mm	O.P. _{med} mm
NR 1 T	300	80	1.7	0.9	0.9	15.6	21.5

O.F.: Forza azionante / *Operating Force*

R.F.: Forza di ritorno / *Releasing Force*

P.T.: Precorsa / *Pre Travel*

D.T.: Corsa differenziale / *Differential Travel*

O.T.: Oltre corsa / *Over Travel*

P.I.: Posizione di partenza / *Free Position*

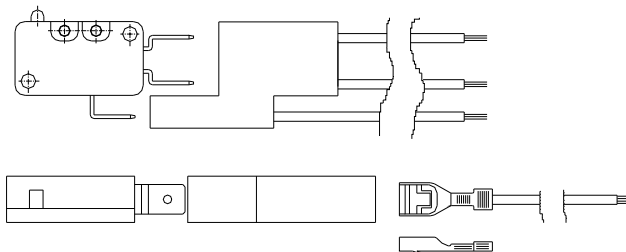
O.P.: Posizione di scatto / *Operating Position*

Accessori

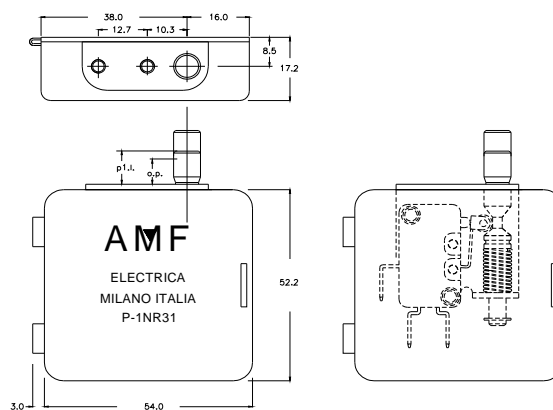
ACCESSORIES

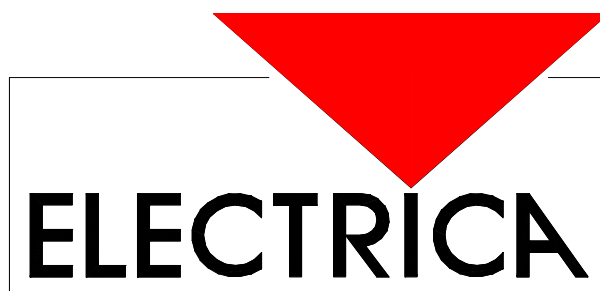
Connettori per cavetti / **CABLE CONNECTOR FOR NR-series**

(terminali faston / *quick connect terminal, type 5*)



Protezione / **PROTECTION FOLDER**





Per versioni personalizzate, si prega di contattare il ns. Uff. Tecnico /
For any different configuration, please contact the Factory

Electrica s.r.l. - via privata Della Torre, 24 - 20127 Milano - Italia
Tel.+39 02 2892641 Fax +39 02 2827511
website: www.electrica.it email: info@electrica.it

Microswitch Sales Division - via Manin, 350/22 - 20099 Sesto San Giovanni (MI) - Italia
Tel +39 02 243 00672 Fax +39 02 243 03271
email: microswitches@electrica.it